

B.ARCH. SEM – II (CBCS – 2015 COURSE) : SUMMER - 2018

SUBJECT : ARCHITECTURAL DRAWING & GRAPHICS - II

Day : **Monday**
Date : **30/04/2018**

S-2018-3305

Time : **02.00 P.M. To 05.00 P.M.**
Max. Marks : 60

N.B.

- 1) Attempt any **THREE** questions from Section – I and any **THREE** questions from Section – II.
- 2) Figures to the right indicate **FULL** marks.
- 3) Answers to both the sections should be written in **SEPARATE** answer book.
- 4) Retain all construction line.
- 5) Assume suitable data if necessary.

SECTION – I

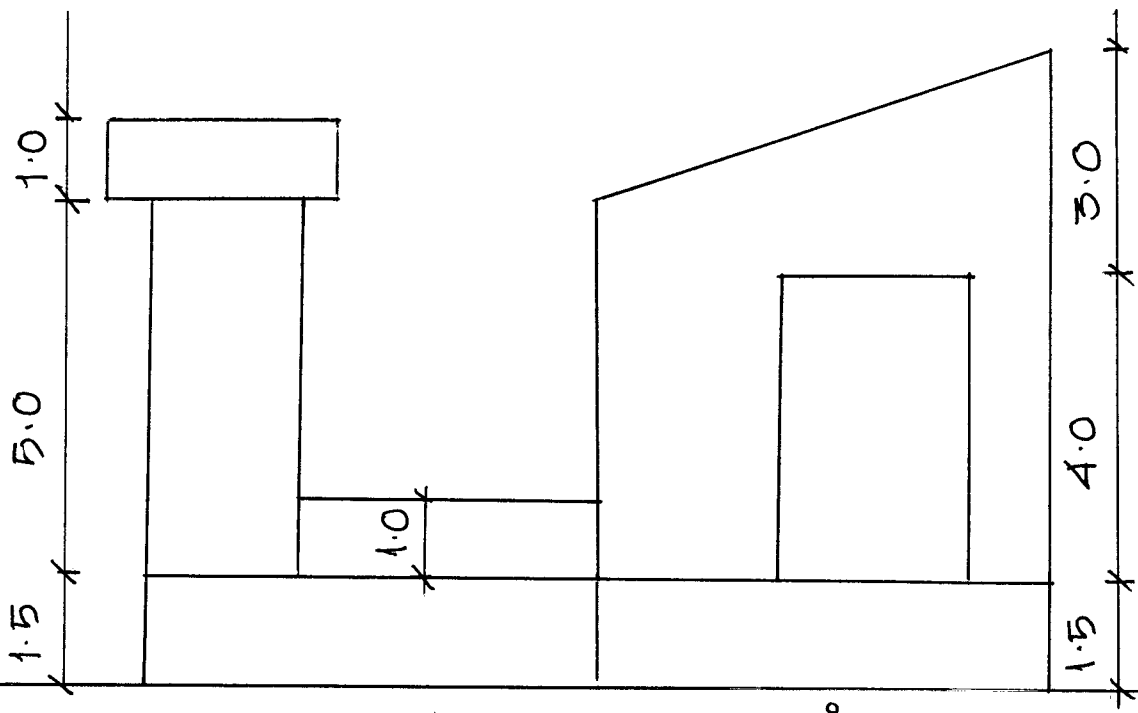
- Q.1** Draw Isometric view of object given in fig. 1 from direction X. (10)
- Q.2** Draw Isometric view of object given in Fig. 1 from direction Y. (10)
- Q.3** Draw sciography in plan and elevation of given Fig. 1. (10)
- Q.4** Do composition of given solids and draw plan and front elevation with its sciography. (prism side 4 x 4 ht. 7 cm, cube of side 5 cm, pyramid of side 3 x 3 and ht. 5 cm) (10)
- Q.5** Explain the term shade and shadow with suitable examples. (10)

SECTION – II

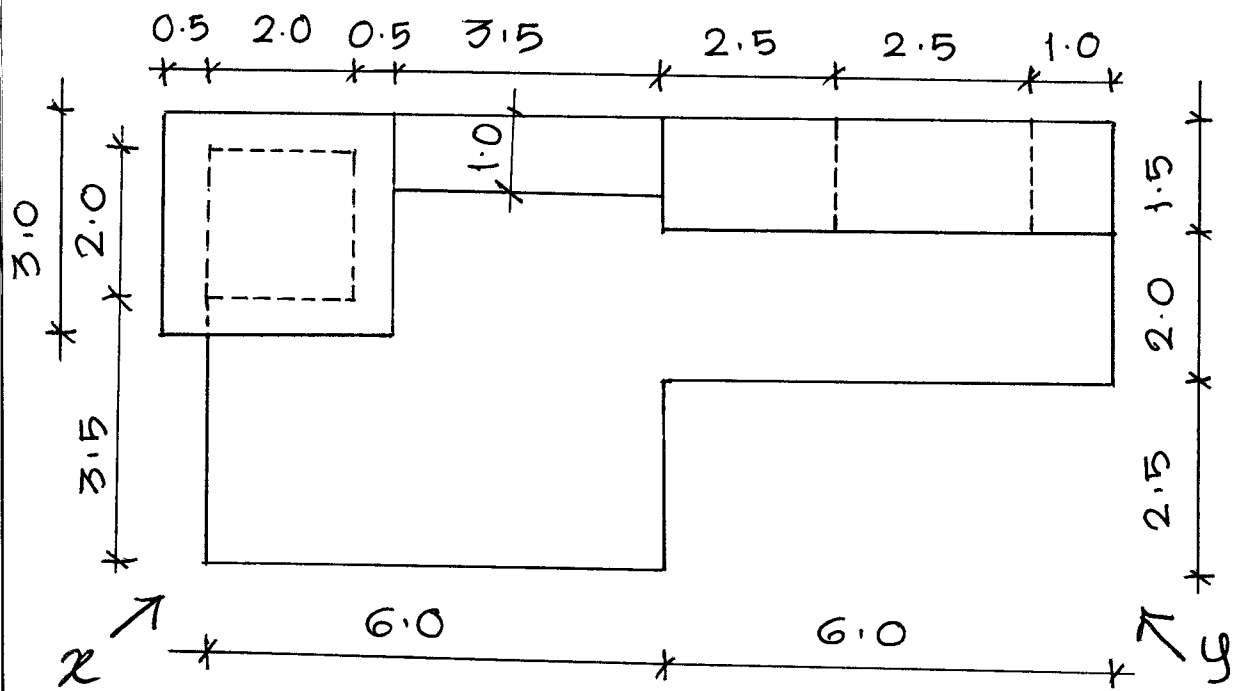
- Q.6** Draw left hand side elevation of object given in Fig. 2 with given plan and front elevation. (10)
- Q.7** Draw right hand side view of Fig. 2. (10)
- Q.8** Draw Isometric view of interpenetration of solid given in Fig. 2 from direction 'O'. (10)
- Q.9** Interpenetrate suitably the given objects for making composition and draw isometric of the same. 5 x 5 and ht 7 cm, cylinder dia. 2 cm ht 5, and plane of size 4 x 7 cm . (10)
- Q.10** Render one Isometric view of above Q.8 and Q.9 with pencil shading or colour pencil. (10)

* * *

A



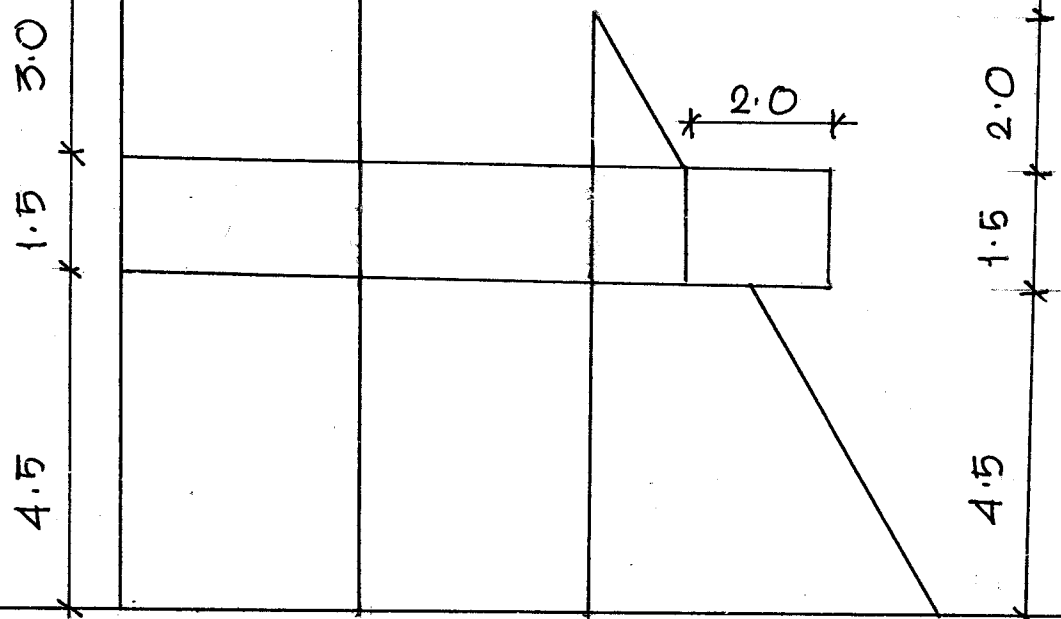
FRONT ELEVATION



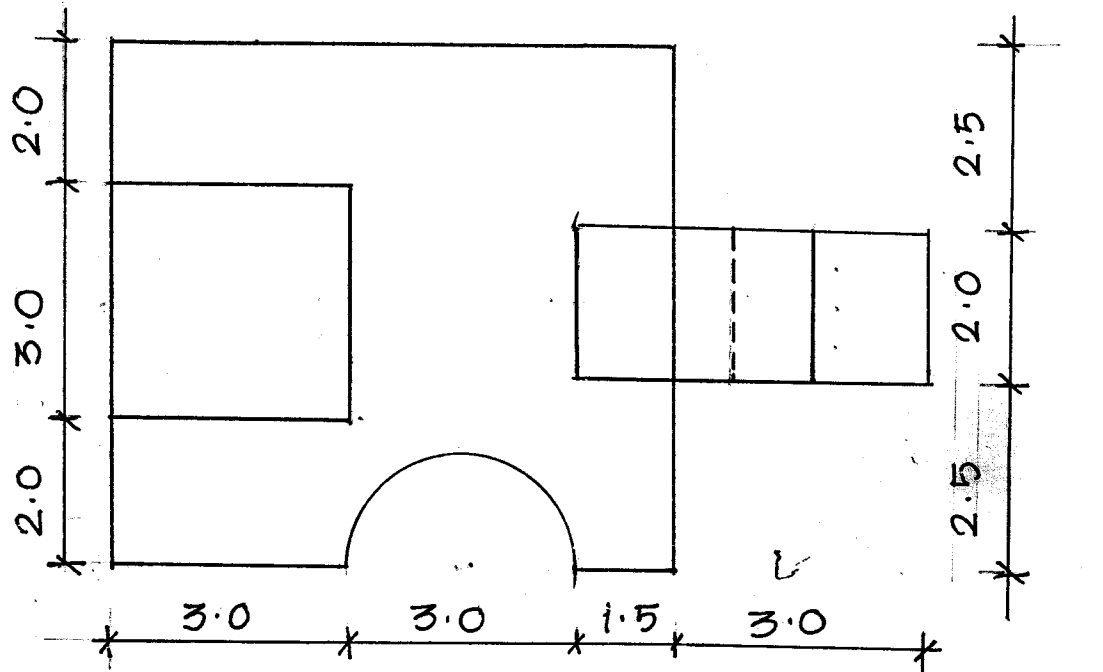
PLAN

FIG. 1.

ALL DIM. ARE IN CM.



FRONT ELEVATION



PLAN.

FIG. 2

ALL DIM. ARE IN CM